

FEATURES

- * Long term stability
- * Cost effective
- * SMD version
- * Tape & Reel

The IST-26 are pre-formed lead configured crystals for use in surface mount requirements. Both packages offer a cost effective solution over other SMD versions.



OPERATING CONDITIONS/ELECTRICAL CHARACTERISTICS

PARAMETERS	CONDITIONS	IST-26			UNITS
		MIN	TYP	MAX	
NORMAL FREQUENCY	F ₀		32.768		KHz
FREQUENCY TOLERANCE		-20		+20	PPM
TURNOVER TEMPERATURE		+20	+25	+30	°C
OPERATING TEMP RANGE	T _{opr}	-10		+60	°C
STORAGE TEMP RANGE	T _{stg}	-55		+125	°C
EQUIVALENT SERIES RESISTANCE	ESR			50	KΩ
INSULATION RESISTANCE	100 V DC ± 15 V	500M			
DRIVE LEVEL	DL			1.0	μW
AGING (FIRST YEAR)	25°C ± 3°C			± 5	PPM
TEMPERATURE COEFFICIENT				-0.04	ppm/°C ²

PACKAGE DIMENSIONS (mm)

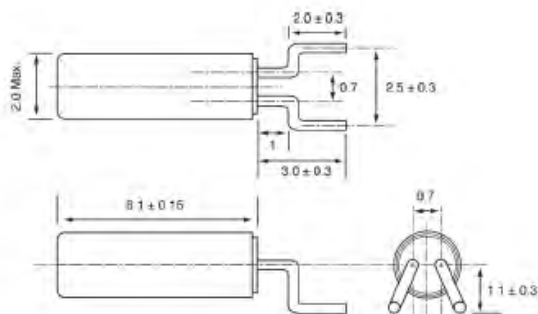


Figure 1) ECS-2X6 - Top, Side and End views

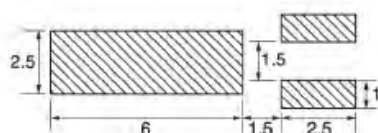
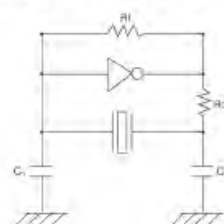


Figure 2) ECS-2X6 Land Pattern - Top view

RECOMMENDED OSCILLATION CIRCUIT



ELECTRICAL CHARACTERISTICS

IC: TC 4069P
 R_f: 10MΩ
 R_d: 330KΩ (As required)
 C₁ = 22pF, C₂ = 22pF
 V_{DD} = 3.0V

In this circuit, low drive level with a maximum of 1μW is recommended. If excessive drive is applied, irregular oscillation or quartz element fractures may occur.